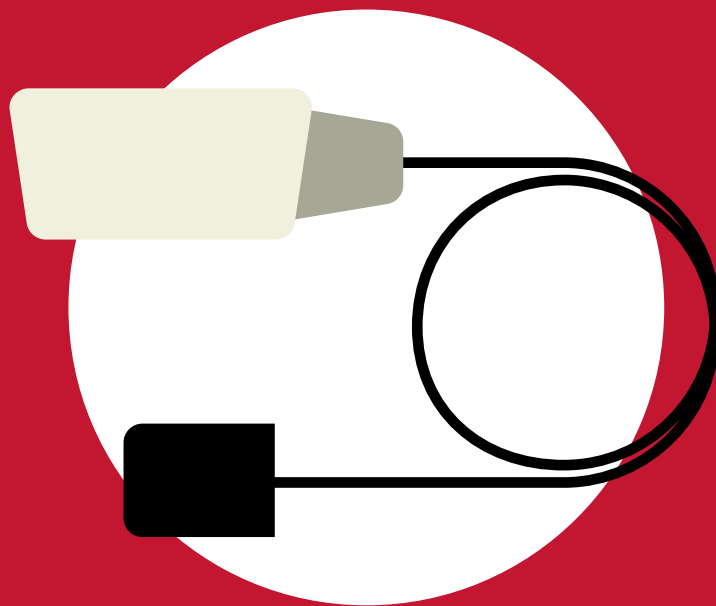


---

# INTRA-ORAL SENSOR

---

DR15



---

SUPERIOR IMAGE QUALITY  
STREAMLINED WORKFLOW

---

# DR15, DIGITAL RADIOGRAPHY IMAGING SOLUTION

DR15 is the industry leading intra-oral sensor, offering superior diagnostic images that are essential to successful implant surgery and endodontic treatment. Featuring unparalleled durability and image quality, DR15 delivers speed and efficiency while maintaining patient comfort.

## IMAGE QUALITY

DR15 uses Hybrid CMOS technology (one-chip trigger, switching, redundancy signal), providing the highest quality images possible. This high-resolution technology, combined with noise and artifact suppression, provides clear and consistent results along with a more precise diagnosis.

## PATIENT COMFORT

The rounded-off edges and multiple size options of the DR15 maximize patient comfort.

## STREAMLINED WORKFLOW

DR15 uses USB 2.0 technology for unparalleled connectivity to any PC in the clinic, and the user-friendly software offers rapid image acquisition. With its unmatched simplicity and reliability, DR15's real-time transmission diagnostic image and eliminates the hassle of developing film.

## DURABILITY

The rugged, alluminium case construction of minimizes sensor damage from accidental shocks or drops. The patented cable connection structure maintains cable integrity during frequent and extreme bending.



|                         |                                      |
|-------------------------|--------------------------------------|
| Detection Structure:    | Low Noise Hybrid CMOS                |
| Dimensions (W x L x T): | EzSensor 2.0 1.24 x 1.69 x 0.19 inch |
| Active Area:            | 0.035 mm                             |
| Pixel Pitch:            | 0.035 mm                             |
| Theoretical Resolution: | 14 lp/mm                             |
| Active Pixel Array:     | 744 x 1030 pixels ( 26.04 x 36.05)   |
| Dynamic Range:          | 4096                                 |
| Signal to Noise Ratio:  | >37dB                                |
| Interface:              | USB with Control Board               |
| Cable Length:           | 3m                                   |

These specifications subject to change without prior notice.

Round corners, smooth edges, and a reinforced fiber optic cable connection are the results of a completely new design concepts that focuses on patient comfort and product durability.

## DEALER INFORMATION



[www.aria-vet.com](http://www.aria-vet.com)